

THE MINITIME MACHINE PRESENTS

# HOW TO

A SERIES OF  
PROJECTS FOR  
THE BEGINNING  
MINIATURE MAKER

## JUNE 2016: LITTLE LEATHERBOUND COLORED PENCIL SET



### Materials and Supplies:

five toothpicks

fine grit sandpaper

craft paint for 8 different colored pencils. Suggested colors: black, brown, blue, red, yellow, green, purple, orange

scissors, paint brush, small piece of Styrofoam

3" x 6" scrap of thin brown leather

10" of flat leather cording to match scrap leather (available in the jewelry section of craft stores)

Tacky glue

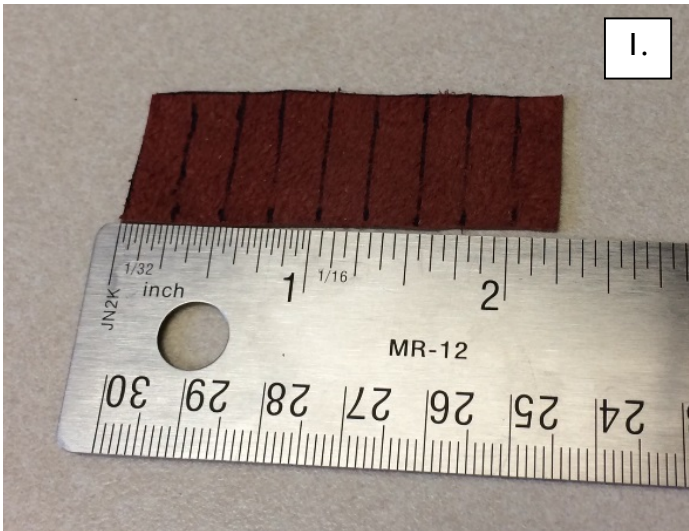
## Instructions:

### Colored Pencils

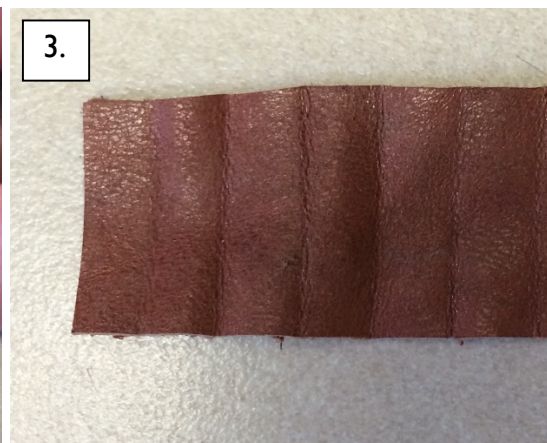
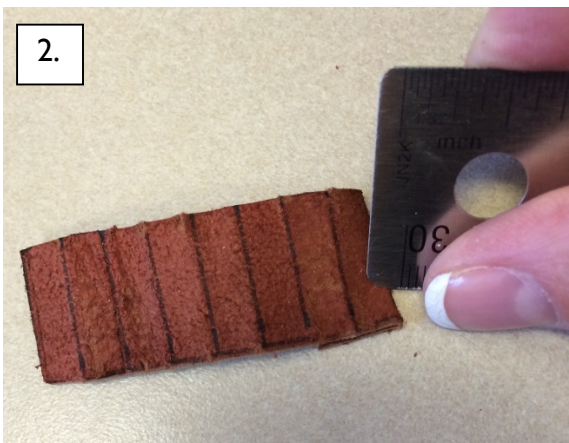
1. Measure one inch from each end of each toothpick. Cut the toothpicks at the marking to create 8 pencil barrels. Sand the cut ends and sand the tips to create a blunt pencil end.
2. Using eight different colors, one color per toothpick, paint the barrel of each toothpick to create a set of colored pencils. You can paint the barrel and stick the tip of the toothpick into a piece of Styrofoam while you wait for the paint to dry. Once the paint on the barrel is dry, dip the tips of the pencils into the matching paint colors to create the illusion of the colored pencil lead.

### Leather Pouch

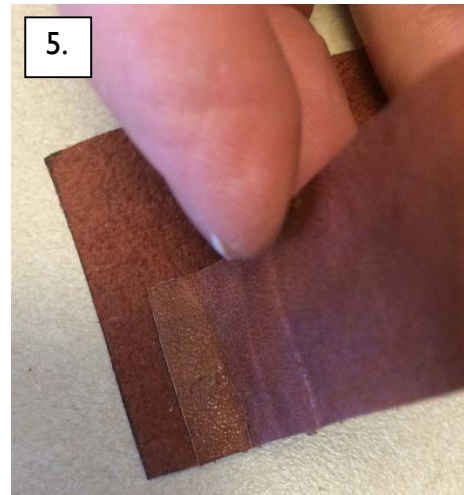
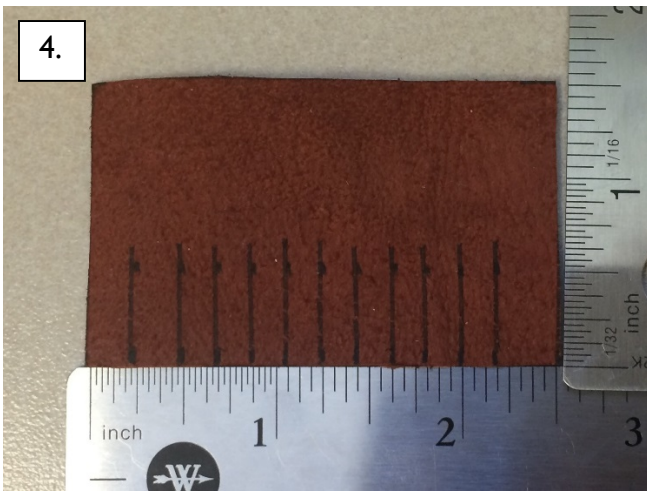
1. Cut one rectangle of leather  $2\frac{1}{2}$ " x  $1\frac{1}{2}$ ". This will be the exterior of the leather case.



2. Cut a second rectangle of leather  $2\frac{1}{2}$ " x  $\frac{3}{4}$ ". This piece of leather will be attached to the interior to form the pouch that will hold the pencils. Measure and mark  $\frac{1}{4}$ " increments on the back side of this piece of leather as pictured in illustration 1.



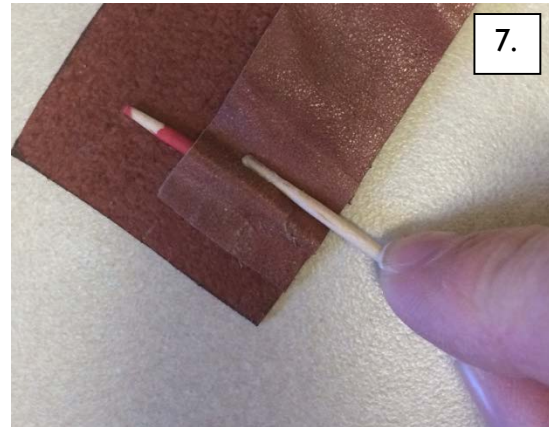
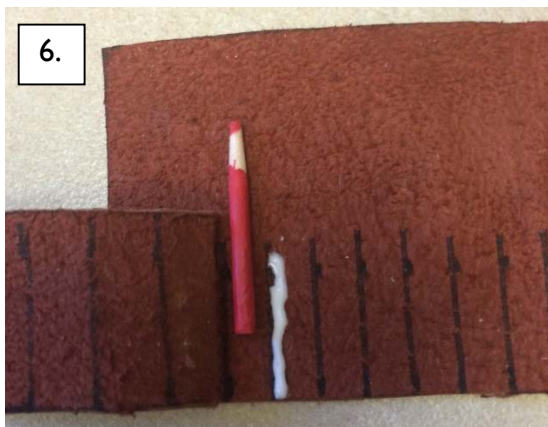
3. Fold the leather along the lines you just marked creasing the leather. You can use a metal edge ruler to rub the fold edge to form the crease. See illustrations 2 and 3.



4. Now you will mark the glue lines where the pouch will attach to the exterior piece of leather. Lay the exterior leather rectangle horizontally on your work surface. Beginning  $\frac{1}{4}$ " from the left edge, measure and mark two lines  $\frac{1}{4}$ " apart and  $\frac{5}{8}$ " from the lower edge of the leather. Next make nine more lines  $\frac{3}{16}$ " apart and  $\frac{5}{8}$ " from the lower edge. See illustration 4.

You will now glue the interior pouch to the exterior leather. The first and last  $\frac{1}{4}$ " of the interior piece will be glued flat against the exterior to secure the piece in place, while the eight  $\frac{1}{4}$ " increments in-between will be glued over the pencils.

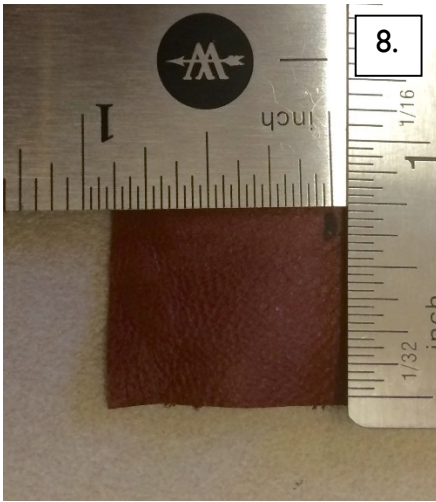
5. Using a toothpick for control, apply glue along the first  $\frac{1}{4}$ " of the interior leather rectangle. Attach this part of the interior leather piece to the exterior leather piece lining up the edge with the first line you drew on the exterior piece. See illustration 5. Give the glue a minute or two to set before moving on to the next step.



6. Next, lay your first pencil between the interior piece of leather and the next line on the exterior piece. Using a toothpick apply glue to the pen line and then align the first crease on the interior piece with the glue line and press it together forming a pouch over the pencil. See illustration 6. Use a toothpick and rub along the exterior of the

crease to reinforce the glue. See illustration 7. Repeat these two steps adding a new colored pencil each time until you have  $\frac{1}{4}$ " of leather left on the interior piece.

7. Glue the last  $\frac{1}{4}$ " of the interior piece flat against the exterior piece completing the pouch.



8. The last step is to attach the strap that is wrapped around the case to close it. Lay your pencil case face down and make a small mark  $\frac{3}{4}$ " from the bottom and  $\frac{7}{8}$ " from the right side of the pouch. See illustration 8. Make a small mark 4" from one end of the cord. Apply a drop of glue to the mark you made on the pouch and attach the cord at the 4" mark to the case.